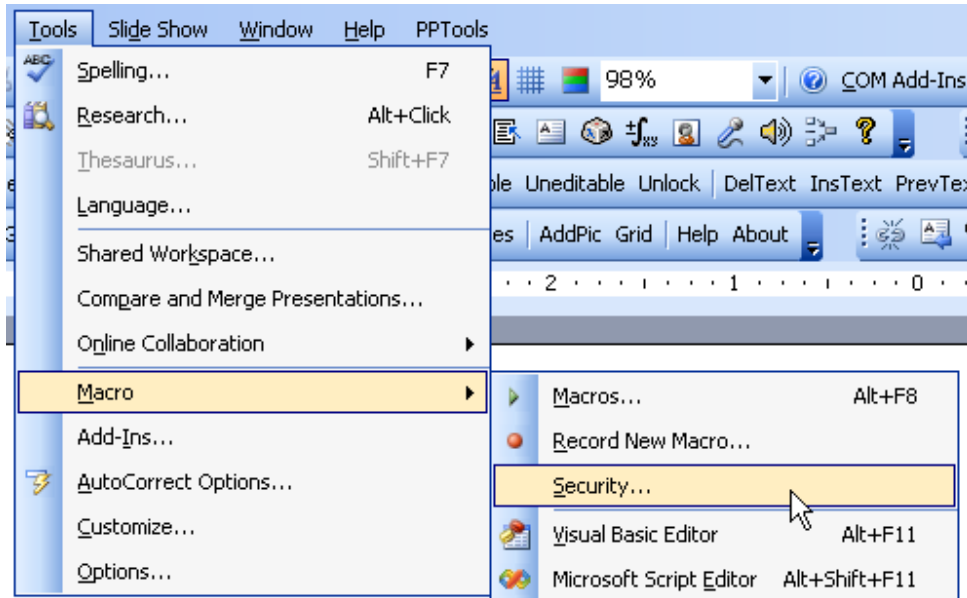


### **Enabling Macros in Excel 2003:**

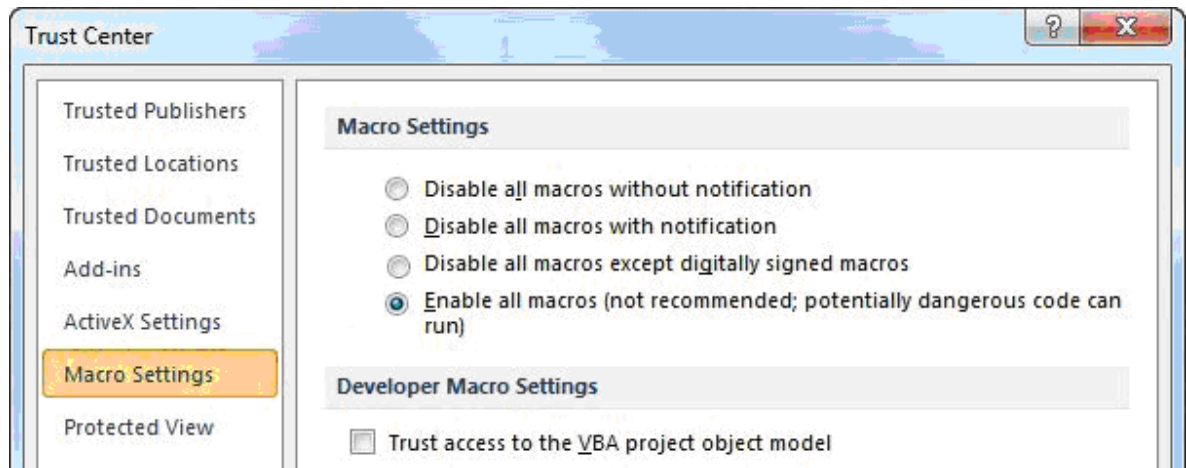
- First of all navigate to 'Tools' tab > 'Macro' > 'Security'.
- After clicking on the 'Security' option, a Security window will open. It will show you all the security levels that you can select for your macros.



- Choose 'Low Security' and click on OK

## **Enable Macros in Excel 2007:**

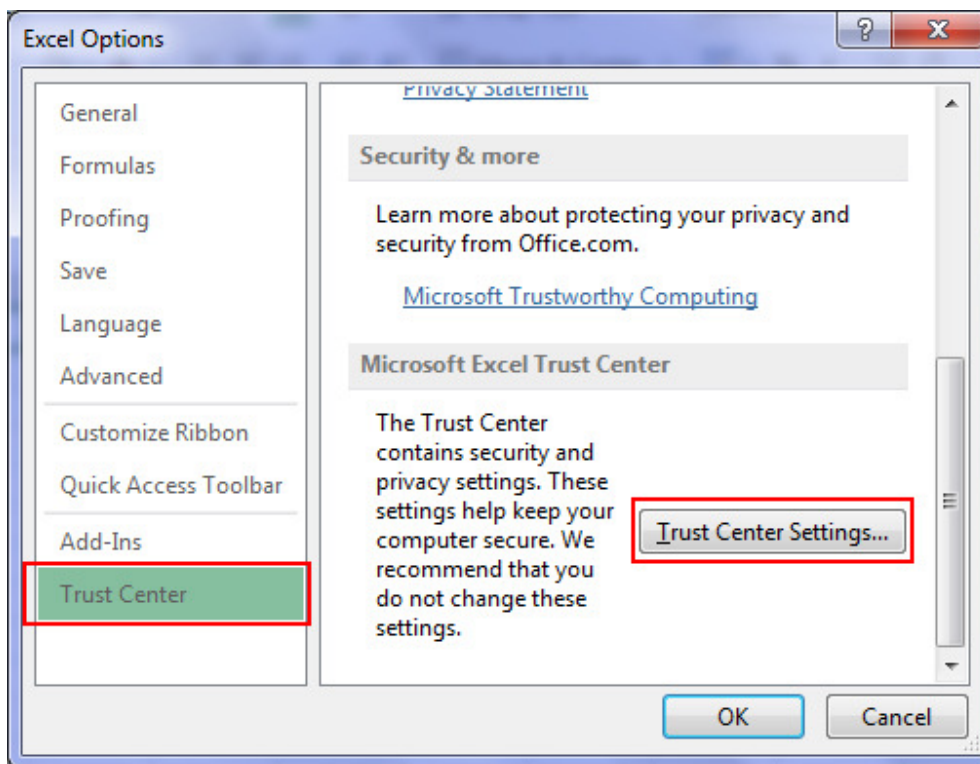
- With an excel file opened click on the 'Office' button.
- Then click on 'Excel Options' (present at the bottom).
- Next select the 'Trust Center' > 'Trust Center Settings'.



- In the trust centre settings click on the 'Macro Settings' .And from there choose **Enable all macros (not recommended, potentially dangerous code can run)**

## **Enabling Macros in Excel 2010 and 2013:**

Open a Microsoft Excel file, and navigate to 'File' > 'Options' > 'Trust Center'. And then click 'Trust Center Settings'.



In the Trust Center Settings window select the 'Macro Settings' option. And choose the security setting **Enable all macros (not recommended, potentially dangerous code can run)**.